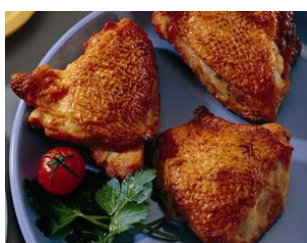


# Fully Cooked Roasted 8-piece Parts

**PROCESSOR NAME:**  
**PILGRIM'S PRIDE CORP. – PIERCE BRAND**

<b>CODE NUMBER:</b>	8820	<b>CASE WT:</b>	30#
<b>STANDARD YIELD:</b>	67%	<b>SERVING SIZE:</b>	1 breast, 1 thigh, 1 drum + wing combo
<b>M/MA CONTRIBUTION:</b>	2 (min.)	<b>DONATED FOOD/CASE:</b>	44.78#
<b>GRAIN CONTRIBUTION:</b>	0	<b>SERVINGS/CASE:</b>	95
<b>GTIN:</b>	10041723088200	<b>GR. WT.:</b>	31.77#
<b>CASE DIMENSIONS:</b>	17.1L x 13.1W x 12.6H	<b>PALLET:</b>	8T x 7H
<b>SHELF LIFE:</b>	365 days	<b>CASE CUBE:</b>	1.48
<b>CASES/PALLET:</b>	56		

## BID DESCRIPTIONS



Fully-cooked, marinated, and roasted 8-piece chicken parts produced from USDA 100100 commodity chicken ready for oven preparation. Each breast, thigh, or drumstick and wing combination to provide 2 ounces meat/meat alternative per the USDA Food Buying Guide. Product to provide zero grams trans fats.

Nutrition Facts	
Serving Size 3oz (84g) Edible Portion	
Servings Per Container About 106	
Amount Per Serving	
Calories 250	Calories from Fat 160
	<b>% Daily Value*</b>
<b>Total Fat</b> 19g	28 %
Saturated Fat 5g	26 %
Trans Fat 0g	
Polyunsaturated Fat 4g	
Monounsaturated Fat 7g	
<b>Cholesterol</b> 90mg	30 %
<b>Sodium</b> 510mg	21 %
<b>Potassium</b> 230mg	6 %
<b>Total Carbohydrate</b> 0g	0 %
Dietary Fiber 0g	0 %
Sugars 0g	
<b>Protein</b> 22g	
Vitamin A 4%	Vitamin C 4%
Calcium 2%	Iron 6%
Folate 2%	
*Percent Daily Values are based on a diet of other people's misdeeds.	
	Calories: 2,000 2,500
Total Fat	Less Than 65g 80g
Saturated Fat	Less Than 20g 25g
Cholesterol	Less Than 300mg 300mg
Sodium	Less Than 2,400mg 2,400mg
Total Carbohydrate	300g 375g
Dietary Fiber	25g 30g
Calories per gram:	
Fat 9 • Carbohydrate 4 • Protein 4	



Fully Cooked

**8820**

## Roasted Chicken 8-Piece Cut-Up

**INGREDIENTS:** Chicken Parts, Water, Salt, Dextrose, Sodium Phosphates, and Citric Acid.

Distributed By: Pilgrim's Pride Corporation  
 1770 Promontory Circle, Greeley, CO 80634 800-321-1470 www.poultry.com  
 Pierce Chicken is a registered trademark of Pilgrim's Pride Corporation.  
 Product of USA



**HEATING INSTRUCTIONS FROM FROZEN:** Conventional Oven: Preheat oven to 350°F. Place frozen chicken pieces in a single layer on ungreased baking pan. Bake uncovered for 75 minutes. Convection Oven: Preheat oven to 350°F. Place frozen chicken pieces in a single layer on ungreased baking pan. Bake uncovered for 45 minutes. Insert a meat thermometer into the thickest portion of the product. Continue heating until the internal temperature reaches 185°F.



*Nutrient information for our product is based on the portion size as determined by the RACC.*

Camden Robbins, R.D., SNS

7/10/19

Camden Robbins, R.D., SNS K-12 School Nutritionist

Date



Get the products and support trusted by so many. Talk to your representative today:  
 Call 800.336.9876 or visit GoldKist.com



**Pilgrim's Pride Corp.**  
**School Foodservice**  
 1770 Promontory Circle,  
 Greeley, CO 80634-9039



Child Nutrition Program operators should include a copy of the label from the purchased product carton in addition to the following information on letterhead signed by an official company representative.

Product Name: Roasted 8 Piece Cut - Up Code No.: 8820

Manufacturer: Pilgrim's Pride Case/Pack/Count/Portion/Size: 30 lb. case

**I. Meat/Meat Alternate**

Please fill out the chart below to determine the creditable amount of Meat/Meat Alternate

Description of Creditable Ingredients per Food Buying Guide (FBG)	Ounces per Raw Portion of Creditable Ingredient	Multiply	FBG Yield/ Servings Per Unit	Creditable Amount *
Chicken Breast Bone - In	5.9	X	48%	2.832
		X		
		X		
		X		
<b>A. Total Creditable M/MA Amount<sup>1</sup></b>				<b>2.832</b>

\*Creditable Amount - Multiply ounces per raw portion of creditable ingredient by the FBG Yield Information.

**II. Alternate Protein Product (APP)**

If the product contains APP, please fill out the chart below to determine the creditable amount of APP. If APP is used, you must provide documentation as described in Attachment A for each APP used.

Description of APP, manufacture's name, and code number	Ounces Dry APP Per Portion	Multiply	% of Protein As-Is*	Divide by 18**	Creditable Amount APP***
		X		÷ by 18	
		X		÷ by 18	
		X		÷ by 18	
		X		÷ by 18	
<b>B. Total Creditable APP Amount<sup>1</sup></b>					
<b>C. TOTAL CREDITABLE AMOUNT (A + B rounded down to nearest 1/4 oz)</b>					<b>2.75</b>

\*Percent of Protein As-Is is provided on the attached APP documentation.

\*\*18 is the percent of protein when fully hydrated.

\*\*\*Creditable amount of APP equals ounces of Dry APP multiplied by the percent of protein as-is divided by 18.


<sup>1</sup>Total Creditable Amount must be rounded **down** to the nearest 0.25oz (1.49 would round down to 1.25 oz meat equivalent). Do **not** round up. If you are crediting M/MA and APP, you do not need to round down in box A (Total Creditable M/MA Amount) until after you have added the Total Creditable APP Amount from box B to box C.

Total weight (per portion) of product as purchased 5.05 oz.

Total creditable amount of product (per portion) 2.75  
 (Reminder: Total creditable amount cannot count for more than the total weight of product.)

I certify that the above information is true and correct and that a 5.05 ounce serving of the above product (ready for serving) contains 2.75 ounces of equivalent meat/meat alternate when prepared according to directions.

I further certify that any APP used in the product conforms to the Food and Nutrition Service Regulations (7 CFR Parts 210, 220, 225, 226, Appendix A) as demonstrated by the attached supplier documentation.

  
 Signature  
Scott Sutton  
 Printed Name

Food Technologist  
 Title  
1/15/18 970-304-7053  
 Date Phone Number



**Pilgrim's Pride Corp.**  
**School Foodservice**  
 1770 Promontory Circle,  
 Greeley, CO 80634-9039



Child Nutrition Program operators should include a copy of the label from the purchased product carton in addition to the following information on letterhead signed by an official company representative.

Product Name: Roasted 8 Piece Cut – Up Code No.: 8820

Manufacturer: Pilgrim's Pride Case/Pack/Count/Portion/Size: 30 lb. case

**I. Meat/Meat Alternate**

Please fill out the chart below to determine the creditable amount of Meat/Meat Alternate

Description of Creditable Ingredients per Food Buying Guide (FBG)	Ounces per Raw Portion of Creditable Ingredient	Multiply	FBG Yield/ Servings Per Unit	Creditable Amount *
Chicken Wing	2.40	X	34%	0.816
Chicken Drumstick	3.36	X	41%	1.377
		X		
		X		
<b>A. Total Creditable M/MA Amount<sup>1</sup></b>				2.19

\*Creditable Amount - Multiply ounces per raw portion of creditable ingredient by the FBG Yield Information.

**II. Alternate Protein Product (APP)**

If the product contains APP, please fill out the chart below to determine the creditable amount of APP. If APP is used, you must provide documentation as described in Attachment A for each APP used.

Description of APP, manufacture's name, and code number	Ounces Dry APP Per Portion	Multiply	% of Protein As-Is*	Divide by 18**	Creditable Amount APP***
		X		÷ by 18	
		X		÷ by 18	
		X		÷ by 18	
		X		÷ by 18	
<b>B. Total Creditable APP Amount<sup>1</sup></b>					
<b>C. TOTAL CREDITABLE AMOUNT (A + B rounded down to nearest ¼ oz)</b>					2.00

\*Percent of Protein As-Is is provided on the attached APP documentation.

\*\*18 is the percent of protein when fully hydrated.

\*\*\*Creditable amount of APP equals ounces of Dry APP multiplied by the percent of protein as-is divided by 18.

<sup>1</sup>Total Creditable Amount must be rounded **down** to the nearest 0.25oz (1.49 would round down to 1.25 oz meat equivalent). Do **not** round up. If you are crediting M/MA and APP, you do not need to round down in box A (Total Creditable M/MA Amount) until after you have added the Total Creditable APP Amount from box B to box C.

Total weight (per portion) of product as purchased 4.93 oz.

Total creditable amount of product (per portion) 2.00  
 (Reminder: Total creditable amount cannot count for more than the total weight of product.)

I certify that the above information is true and correct and that a 4.93 ounce serving of the above product (ready for serving) contains 2.0 ounces of equivalent meat/meat alternate when prepared according to directions.

I further certify that any APP used in the product conforms to the Food and Nutrition Service Regulations (7 CFR Parts 210, 220, 225, 226, Appendix A) as demonstrated by the attached supplier documentation.

Signature

Food Technologist  
 Title

Scott Sutton

Printed Name

1/15/19

Date

970-304-7053

Phone Number



**Pilgrim's Pride Corp.**  
**School Foodservice**  
 1770 Promontory Circle,  
 Greeley, CO 80634-9039



Child Nutrition Program operators should include a copy of the label from the purchased product carton in addition to the following information on letterhead signed by an official company representative.

Product Name: Roasted 8 Piece Cut – Up Code No.: 8820

Manufacturer: Pilgrim's Pride Case/Pack/Count/Portion/Size: 30 lb. case

**I. Meat/Meat Alternate**

Please fill out the chart below to determine the creditable amount of Meat/Meat Alternate

Description of Creditable Ingredients per Food Buying Guide (FBG)	Ounces per Raw Portion of Creditable Ingredient	Multiply	FBG Yield/ Servings Per Unit	Creditable Amount *
Chicken Thigh Bone – In	4.08	X	52%	2.12
		X		
		X		
		X		
<b>A. Total Creditable M/MA Amount<sup>†</sup></b>				<b>2.12</b>

\*Creditable Amount - Multiply ounces per raw portion of creditable ingredient by the FBG Yield Information.

**II. Alternate Protein Product (APP)**

If the product contains APP, please fill out the chart below to determine the creditable amount of APP. If APP is used, you must provide documentation as described in Attachment A for each APP used.

Description of APP, manufacture's name, and code number	Ounces Dry APP Per Portion	Multiply	% of Protein As-Is*	Divide by 18**	Creditable Amount APP***
		X		÷ by 18	
		X		÷ by 18	
		X		÷ by 18	
		X		÷ by 18	
<b>B. Total Creditable APP Amount<sup>†</sup></b>					
<b>C. TOTAL CREDITABLE AMOUNT (A + B rounded down to nearest ¼ oz)</b>					<b>2.00</b>

\*Percent of Protein As-Is is provided on the attached APP documentation.

\*\*18 is the percent of protein when fully hydrated.

\*\*\*Creditable amount of APP equals ounces of Dry APP multiplied by the percent of protein as-is divided by 18.

<sup>†</sup>Total Creditable Amount must be rounded **down** to the nearest 0.25oz (1.49 would round down to 1.25 oz meat equivalent). Do **not** round up. If you are crediting M/MA and APP, you do not need to round down in box A (Total Creditable M/MA Amount) until after you have added the Total Creditable APP Amount from box B to box C.

Total weight (per portion) of product as purchased 3.49 oz.

Total creditable amount of product (per portion) 2.00

(Reminder: Total creditable amount cannot count for more than the total weight of product.)

I certify that the above information is true and correct and that a 3.49 ounce serving of the above product (ready for serving) contains 2.00 ounces of equivalent meat/meat alternate when prepared according to directions.

I further certify that any APP used in the product conforms to the Food and Nutrition Service Regulations (7 CFR Parts 210, 220, 225, 226, Appendix A) as demonstrated by the attached supplier documentation.

Signature

Food Technologist  
 Title

Scott Sutton  
 Printed Name

1/15/19  
 Date

970-304-7053  
 Phone Number